



Case History: Texas Eagle Ford/Cuenca Burgos

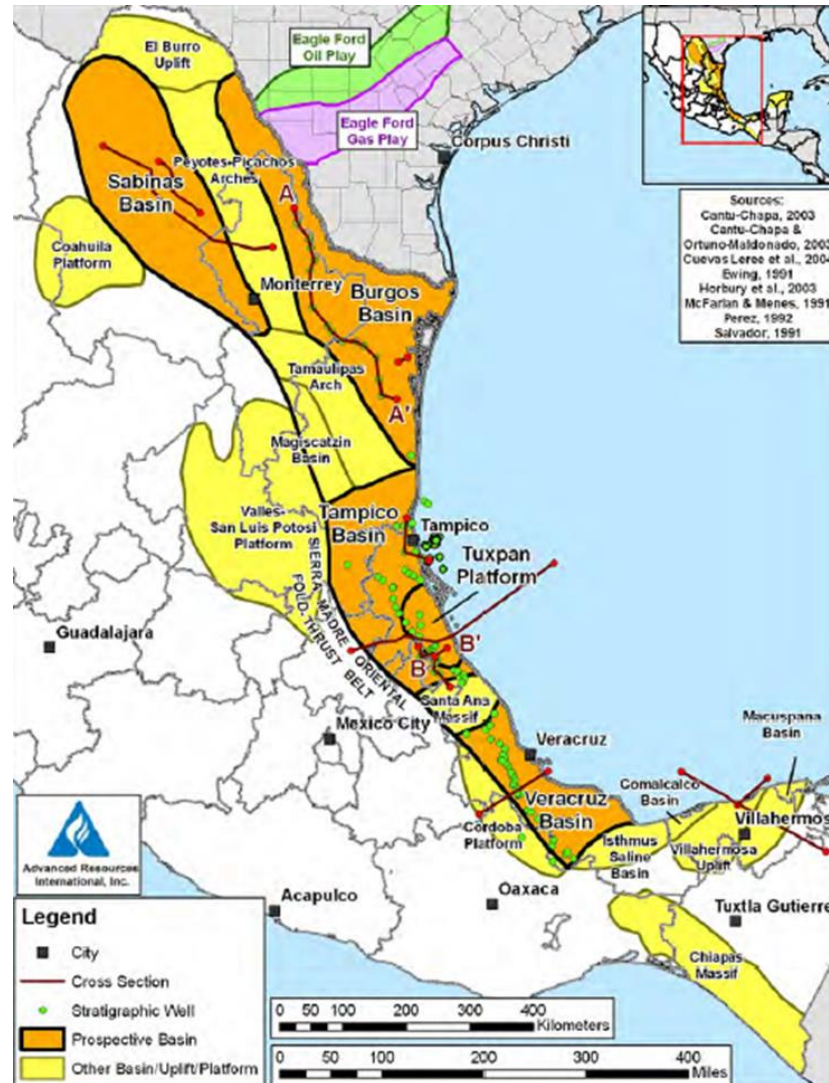
International Workforce



Eagle Ford Boom

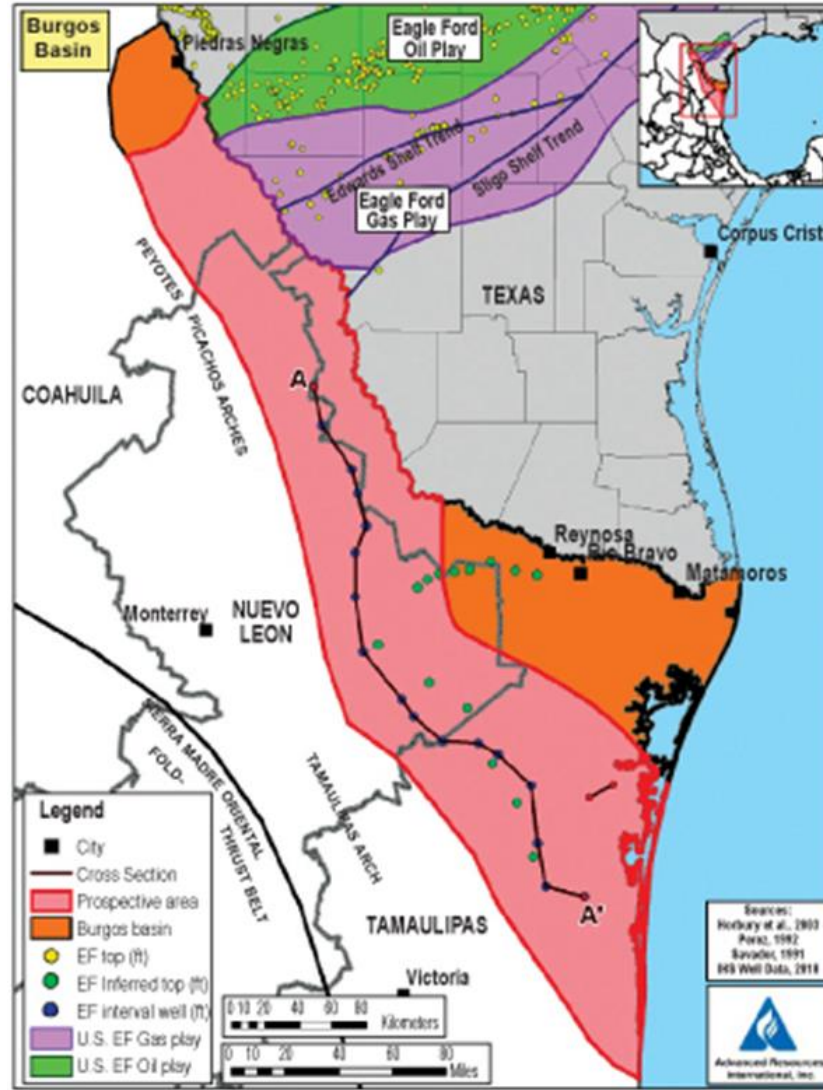
- South Texas Region is transformed - 2008
- Mexico amended its Constitution 12/12/2013 to allow private and foreign Petroleum Industry investors to participate in its oil industry.
- What does this mean for the Texas/Mexico Border?

Where is it located?





Where is it located?





What has Eagle Ford Shale Play done for Texas?

“What has Eagle Ford Shale Play done for Texas? Unambiguously positive” is a great way to describe the effect the current oil boom is having on the Texas economy, and it is why the state’s economy has significantly outperformed the national economy in recent years. One important thing to understand is that economists will tell **you that every dollar of capital invested by the oil and gas industry in Texas has a multiplier effect of an additional \$3 to \$4 in associated economic activity.** When the oil industry is booming, every hotel is full, every café is crowded, clothing stores can’t keep enough socks, underwear and khakis on the shelves, and local supermarkets tend to run out of milk and eggs before each day is through.”

David Blackmon, Why the Shale Miracle Has Happened in Texas Forbes Magazine, May 1, 2013

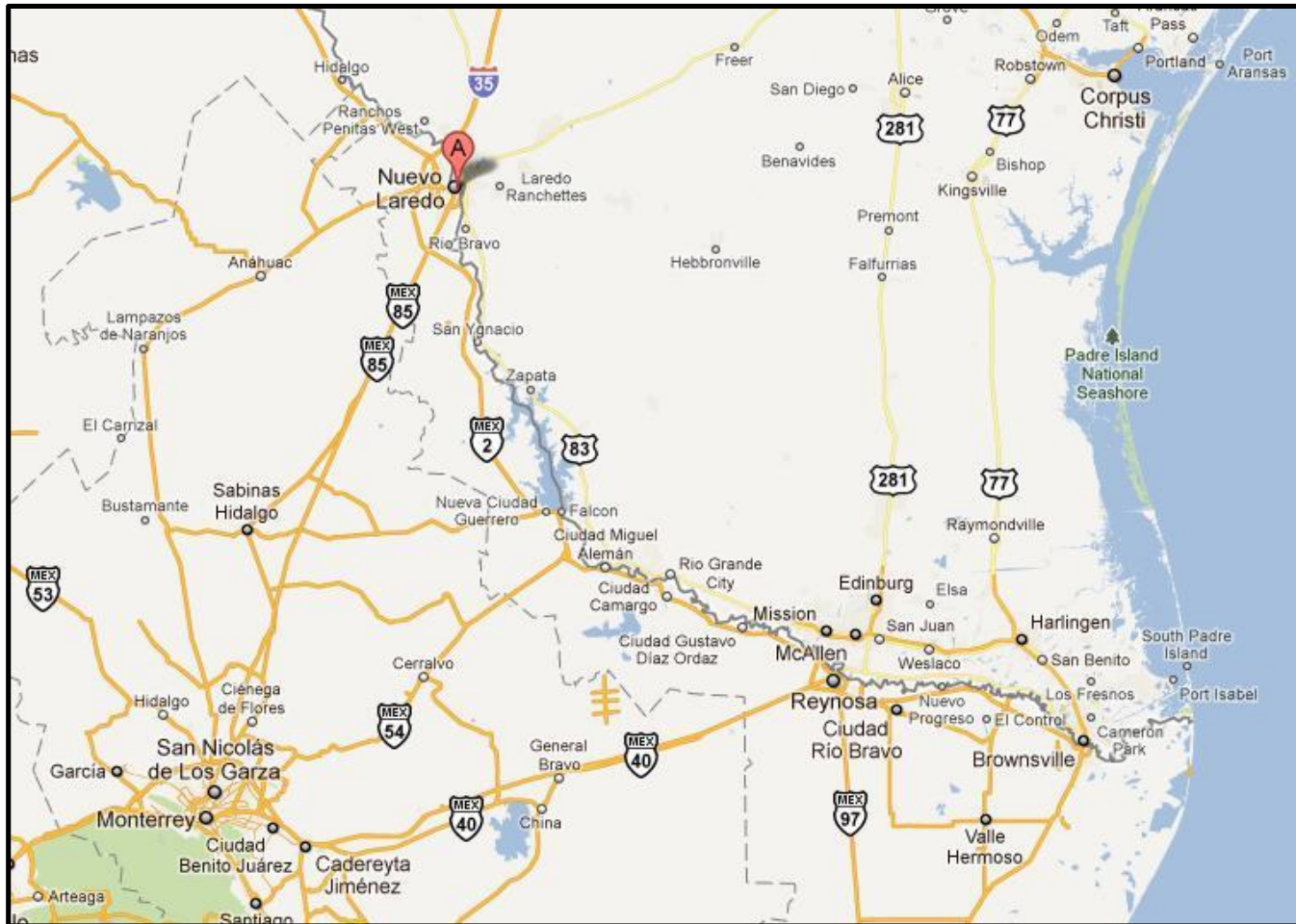


What has Eagle Ford Shale play done for Texans?

- 87 Billion in Revenues for Texans-2013



Border Urban Areas





Population in Border Cities

Del Rio, Texas	35,543 (2012)
Cd. Acuña, Coah	136,755 (2010)
Total	172,298

Eagle Pass, TX	27,283 (2012)
Piedras Negras, Coah.	152,806 (2010)
Total	180,089

Laredo, Texas	244,731 (2012)
N. Laredo, Tam	384,033 (2010)
Total	628,764

Nva. Cd. Guerrero, Tamp.	4,477 (2010)
Total	4,447

Ciudad Mier, Tamaulipas	4,762 (2010)
Total	4,762

Roma, Texas	9,873 (2012)
M. Alemán, Tam	27,015 (2010)
Total	36,888

Rio Grande, TX	13,939 (2012)
Cd. Camargo, Tam	14,933 (2010)
Total	28,872

Sullivan, Texas	4,098 (2012)
Díaz Ordaz, Tam	15,775 (2010)
Total	19,873

Hidalgo, Texas	11,711 (2012)
McAllen, Texas	134,719 (2012)
Reynosa, Tam	608,891 (2010)
Total	755,321

Donna, Texas	16,204 (2012)
Río Bravo, Tam	118,259 (2010)
Total	134,463

Progreso, Texas	5,715 (2012)
N. Progreso, Tam	10,178 (2010)
Total	15,893

Valle Hermoso, Tam	63,170 (2010)
Total	63,170

Brownsville, Texas	180,097 (2012)
H. Matamoros, Tam	489,193 (2010)
Total	669,290

GRAND TOTAL Border Residents	2,714,130
-------------------------------------	------------------

INEGI / United States Census Bureau



Eagle Ford Workforce

- Starting with the most difficult to fill, the top 10 most in-demand energy jobs are:
 1. Mechanical engineer
 2. Field service technician
 3. Production operator
 4. Maintenance technician
 5. Heavy machinery operator
 6. Mechanic
 7. Petroleum engineer
 8. Geologist
 9. Quality assurance/quality control inspector
 10. Electrical engineer

http://www.bizjournals.com/houston/blog/drilling-down/2014/09/the-most-difficult-to-fill-energy-jobs-are.html?ana=e_hstn_nrg&u=GSLGfOIkdkHk204wo+dmNBA0715e8a3&t=1410791997



Eagle Ford Outputs

	Economic Impact	2013
Eagle Ford 15 County Area	Employment full-time	\$114,315.00
	Payroll	\$4,151,223,930.00
	Gross regional product	\$36,325,059,676.00
	Local government revenues	\$2,025,968,804.00
	State revenue, including severance taxes	\$2,028,406,113.00
	Output of oil and gas industry	\$71,829,614,579.00

Totals includes direct, indirect, and induced impacts.

Source: IMPLAN. Texas A&M International Binational Center



Thank You

For more information please contact:

Maria Eugenia Calderon-Porter,
Asst. Vice President Texas A&M International University
Office of Global Initiatives/Binational Center
Laredo, Texas
Telephone: 956-326-2834
Email: Mcalderon@tamiu.edu

www.tamiu.edu/binationalcenter