



**Alamo Colleges Temas Fuerza Laboral/Mano de obra
Energía y el petróleo En Eagle Ford Shale**

**Dr. Federico Zaragoza, Vice Chancellor - Economic and Workforce
Development, Alamo Colleges; fzaragoza@alamo.edu; 210-485-0015**

Saludos de sus Amigos de San Antonio



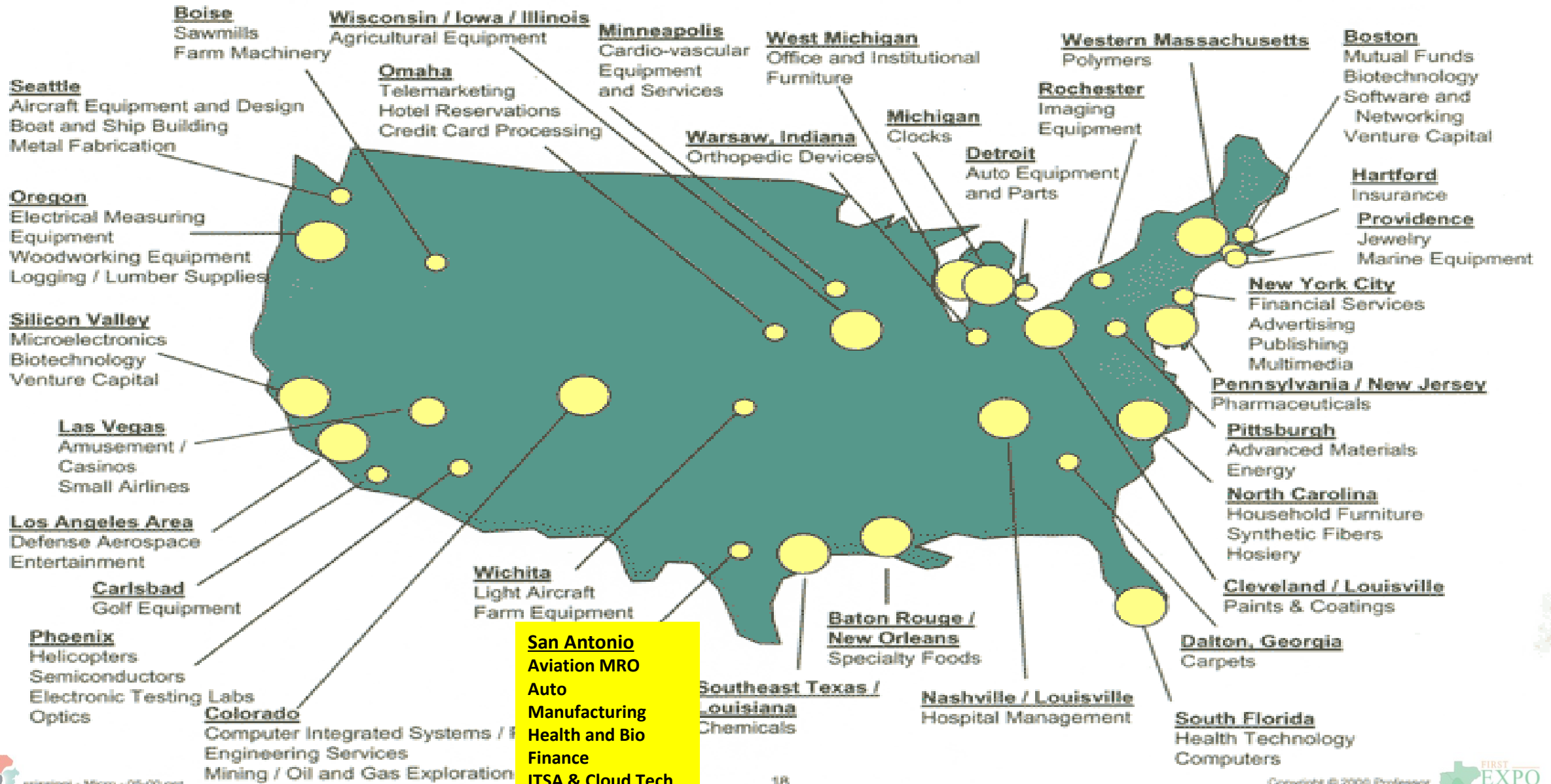
Hola Mexico



San Antonio, Texas



Selected Regional Clusters of Competitive U.S. Industries





ALAMO
COLLEGES

San Antonio, Texas





ALAMO
COLLEGES

San Antonio Missions



Camino del Rio - River walk

WWW.VISITSANANTONIO.COM





St. Philip's College

San Antonio College

Palo Alto College,

Northwest Vista College

Northeast Lakeview College

Students
10,282

Students
23,028

Students
9,303

Students
15,551

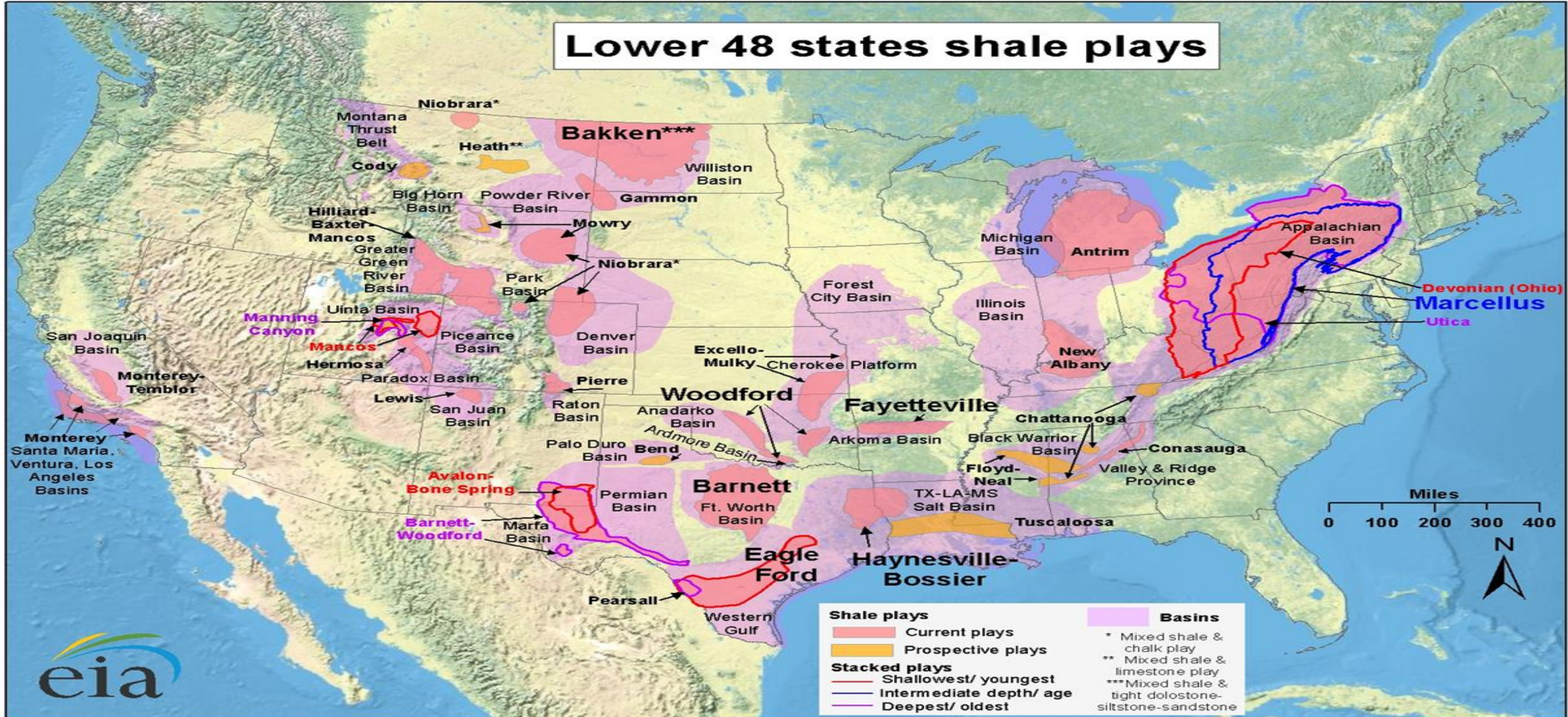
Students
5,197



Presentación - Cuatro 4 Temas Energía y el petróleo En Eagle Ford Shale

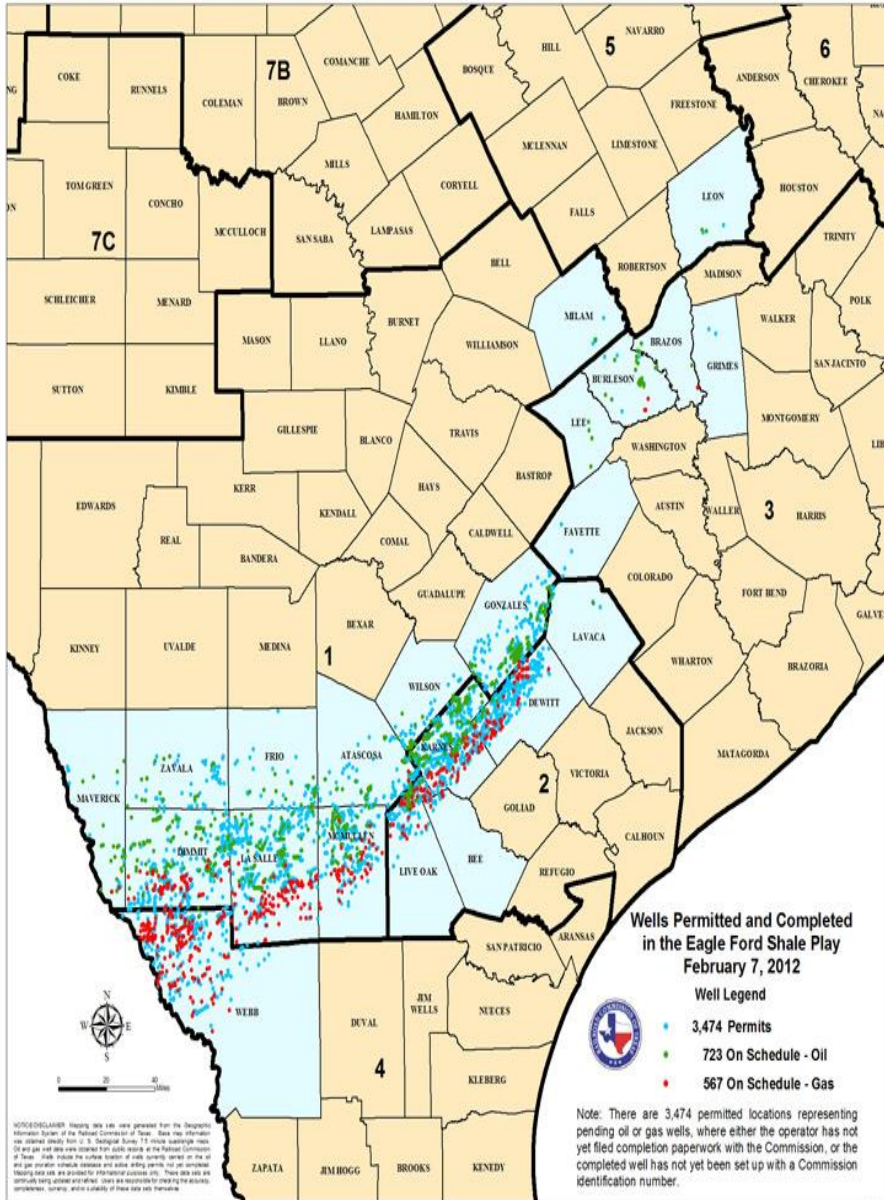
- 1. Fuerza Laboral/Mano de Obra - Soluciones Local, Regional, Nacional y Internacional**
- 2. Entender a El Sector/Cluster Energetico y petróleo**
- 3. Alineación y la modularización de Los programas de estudio de Corto y Largo Plazo**
- 4. Inversión en mejorar educacion y entrenamiento - “Capacity Building”**

Tema 1 - Sistema Nacional Y Regional





Tema 1 Las soluciones deben ser regionales



A. Cinco Workforce Board – (1) Alamo (2) Middle Rio Grande (3) South Texas (4) Coastal and (5) Gulf

B. Seis Community College – (1) Alamo (2) Laredo (3) South West Texas (4) Coastal Bend (5) Victoria (6) Del Mar

III. CONTACT PERSONS:

Each member will appoint a contact person to serve as the member's primary point of contact. The names and telephone numbers of these individuals are as follows:

Alamo Community College District	Federico Zaragoza, Vice Chancellor of Economic & Workforce Development	210 485-0015
Coastal Bend College	Glynis Strause, Dean of Instructional Advancement	361 354-2447
Laredo Community College	Orlando Zepeda, Assistant to the President for Special Projects	956-721-5102
South Texas College	Wanda Garza, Executive Officer for NAAMREI	956-872-2770
Southwest Texas Junior College	William Blain Bennett, Dean of Institutional Advancement and Technology	830 591-7275
Victoria College	Jennifer Yancey, VP for College Advancement and External Affairs	361 582-2519



 Dr. Bruce H Leslie, Chancellor
 Alamo Community College District

 5/22/12
 Date



 Dr. Jimmy Goodson, Interim President
 Coastal Bend College

 5/22/12
 Date




 Juan S. Maldonado

 5/22/12



 Dr. Shirley A Reed, President
 South Texas College

 5/22/2012
 Date



 Dr. Ismael Sosa, President
 Southwest Texas Junior College

 5/22/2012
 Date



 Dr. Tom Butler, President
 Victoria College

 5/22/2012
 Date



Tema 2 - Entender a El Sector/Cluster Energetico



Phase 1: ENTRY - Entranda 0-2 years

Mapping, Plan Infrastructure
Engage Landowners, Secure leases



TEMA # 2 - Enteder



Phase 2: EXPLORATION - Exploracion 2-3 years

Exploratory Drilling, Reservoir Producibility, confirm technical and geologic characteristics
Environmental Standards, Safety & Health Protocols



Phase 3: DEVELOPMENT - Desarrollo 3-5 years

Well Construction
Infill Drilling
Maximize Production



Phase 4: OPERATIONS / PRODUCTION - Operacion/Produccion 10-50 years

Long term focus on extracting, producing,
Move Product to Processing and Sales



Phase 5: EXIT - Salida 0-2 years

Commitment to reclaiming land using best practice restoration and reclamation processes regardless of the reason for ceasing activities





Tema #2 Entender

Dos Cambios en Eagle Ford Shale

- 1. Employment Growth** - Employment effects are expected not only in natural gas extraction industries, but also in a number of relevant support industries. In total, **31,705 new jobs** are projected to be supported in 2020 in the six-county area.
- 2. Employment Shift & Diversification** - In 2009, the *total* employment in the six-county area was just under 82,000. Of these expected increases, only about ***12 percent of the jobs are in construction and extracting;***
 - major support categories include office and administrative support, transportation (includes the moving of goods), business and financial services, architecture and engineering, and even the sciences.



UTSA 2010 Estudio Fuerza Laboral

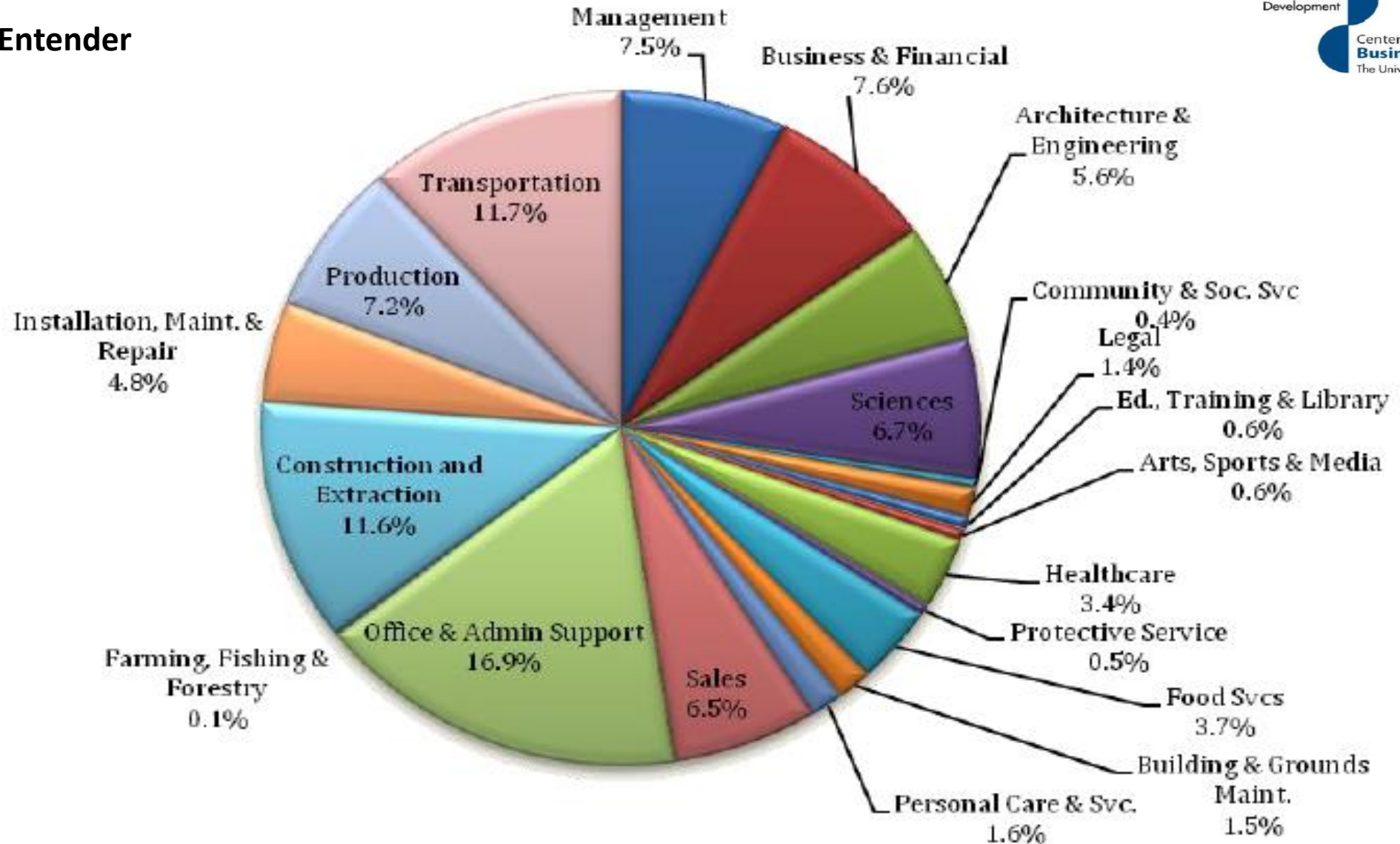
Employment Impact Occupation Categories

Tema #2 Entender

Institute for Economic Development



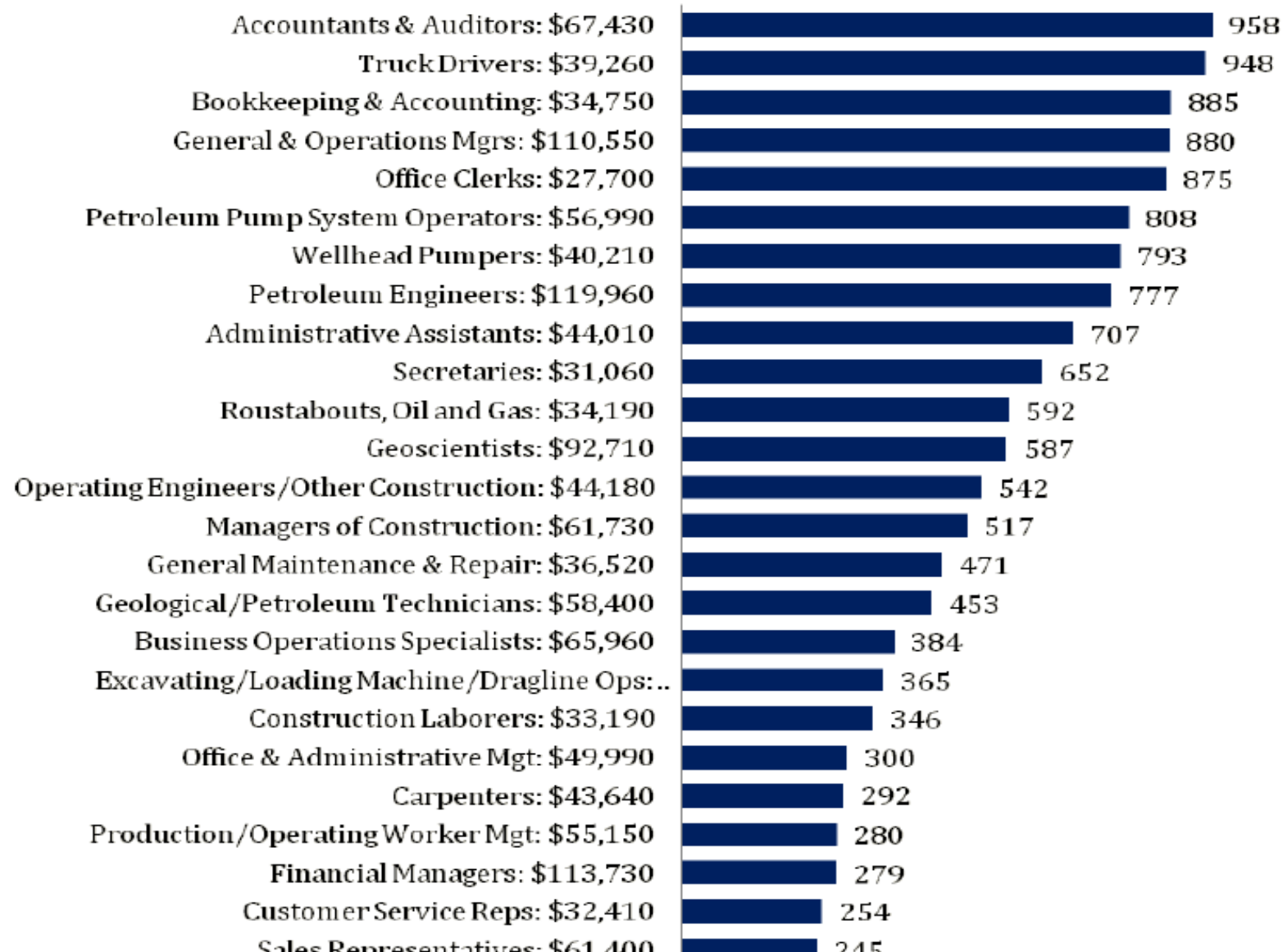
Center for Community and Business Research
The University of Texas at San Antonio



Los Trabajos – Estudio UTSA #2

Tema #2 Entender

Highest Jobs-Projected Occupations with Average Wages Greater than the 6-County Average





UTSA Estudio #2 - Crecimiento Neto Proyecciones de Trabajo para 2018

Tema #2
Entender

Occupational Cluster	Grupo Ocupacional	Net Growth 2010 - 2018
Professional Administrative or Business Support		14,384
Profesionales Administrativos o Apoyo de negocios		
Engineering and Petro Technicians		
Ingenieria y Tecnicos del Petroleo		5,827
Field Based Technicians		
Tecnicos de campo		1,444
Grand Totals		21,655

Key: Yellow = Engineering & Petro Tech; Green = Field Techs; and Blue = Professional or Admin/Bus Support



A L A M O
C O L L E G E S

Tema 3 - Alineación y la modularización de Los programas de estudio de Corto y Largo Plazo

- 314 carreras y programas tecnicos y laboratorios de clase mundial en areas como, enfermeria, computacion, informacion, Tecnicos en aereonautica, manufactura avanzada, electronica, criminologia, Tecnicos medicos, enfermeria en cuidados respiratorios, soldadura
- 33,000 – Estudiantes en Educacion Continua





Tema 3 - Alineación - Analisis Institucional de Huecos Programa de Estudios

Demanda Ocupacional/SOC	Programas de Entrenamiento activos
Bookkeeping & Accounting Clerks (2,322); Accounting & Auditors (1,973), Admin Assistant (2,322), Secretarial	Alamo College programs include existing Business Management, Clerical, Accounting, IT – OST office skills; AAS Programs. (All Colleges)
Roustabout (254), Machinery Mechanics (290); Maintenance and Repair (1,545)	Production Technicians; Manufacturing; Equipment Operators; Construction Trades; Power Generation; Instrumentation, Welding; Pipefitting; Electrical (SPC) –
First Line Supervisors/Mangers of Construction Trades and Production	Construction Management/ Project Management (CE SAC, SPC) Recommend Specialty
Financial Analysts (974) and Financial Managers (900)	Finance and Business Management. (All Colleges)
Truck Drivers, Tractor Trailers	Truck Driving (SPC) – Recommend Specialty
General Operations Management and Leadership	Business Management (PAC,SAC,SPC,NVC) – Recommend Specialty



Tema 3 - Alineación - Analisis Institucional de Huecos Programa de Estudios

Demanda	Programas de entrenamiento existentes
Geological (258) and Petroleum Tech and Engineers (159)	Geology Transfer Program (SAC and NVC) – – Recommend Advanced Certificate Specialty
Service Unit Operators, Oil & Gas and mining operations.	Instrumentation; Electromechanical, Diesel Maintenance, Production Technicians – Manufacturing; Equipment Operators; Construction Trades.(SPC, PAC) – Recommend Revision
Petroleum Pump System Operations, Refinery; and Gauges	Instrumentation; Electromechanical, Plumbing; Water Management. (NVC,SPC,PAC) – Recommend Revision
Well Head Pumpers	Plumbing and Pipe fitting, some instrumentation (SPC) – Recommend Specialty
Helpers and Extraction Workers	Production Technicians – Manufacturing; Equipment Operators; Construction Trades.(SPC) – Recommend Revision



Proyecciones del crecimiento del Empleo

Top 27 SOC codes in Alamo Area para Petroleo

Soc Code	Description (1 to 10)	2010 Jobs	2018 Jobs	Change	% Change	2011 Hourly Wages
43-3030	Bookkeeping, accounting and Auditing Clerks Contabilidad y Auditoria oficinistas	14,614	16,936	2,322	18%	\$15.41
13-2011	Accountants and auditors Contadores y Auditores	9,184	11,157	1,973	21%	\$20.72
47-1011	First-line supervisors/mgrs of prod & oper wrks Gerentes y Supervisores de linea de Produccion y trabajadores de operacion	7,294	9,174	1,880	26%	\$25.98
43-6011	Executive Secretaries, and admin assistants Secretarias Executivas asistentes administrativos	10,044	11,667	1,623	16%	\$17.34
49-9042	Maintenance and repair workers, general Trabajadores de Mantenimiento y reparacion, general	9,676	11,221	1,545	16%	\$12.68
43-6014	Secretaries, except legal, medical and executive Secretarias, con excepcion de legal, medicina y ejecutiva	15,956	17,456	1,500	9%	\$13.08
53-3032	Truck drivers, heavy and tractor trailer Chofer de camion, pesado y trailer tractor	11,377	12,763	1,386	12%	\$16.27
11-1021	General and operations managers Gerente General y de Operaciones	11,916	12,983	1,067	9%	\$39.23
13-2051	Financial Analysts Analista Financiero	3,255	4,229	974	30%	\$20.80

Key: Yellow = Engineering & Petro Tech; Green = Field Techs; Blue = Professional or Admin/Bus Support



Continuacion – Proyeccion Crecimiento de Empleos Top 27 en el Area del Alamo para la Extraccion del Petroleo y el Gas

Soc Code	Description Rank 10-22	2010 Jobs	2018 Jobs	Change	% Change	2011 Hourly Wages
13-1190	Business operation specialists, all other Especialista operaciones de negocios	7,629	8,471	842	11%	\$30.70
17-3020	Engineering technicians, except drafters Tecnicos de Ingenieria, exceptuando dibujantes	3,297	3,706	409	12%	\$21.92
49-1010	First-line sups/mgrs of mech, installers and reprs Mgrs supervisores de 1a. Linea de Mecanicos, instaladores y reparadores.	3,091	3,461	370	12%	\$24.32
23-2093	Title examiners, abstractors and researchers Examinadores de titulos de propiedad, investigadores	1,458	1,793	335	23%	\$29.91
49-9041	Industrial Machinery mechanics Mecanicos de maquinaria industrial	1,275	1,565	290	23%	\$19.66
51-1011	First-line sups/mgrs of prod & operating wrks Gerentes/supervisores de 1a. Linea de produccion y trabajadores de operacion.	3,235	3,496	261	8%	\$21.54
19-4040	Geological and petroleum technicians Tecnicos en petroleo y geologia	518	778	258	50%	\$36.72
47-5071	Roustabouts, oil and gas	660	914	254	38%	\$27.35
17-2190	Engineers, all other Ingenieros y demas	1,356	1,515	159	12%	\$39.08
19-2042	Geoscientists, except hydrologists and geographers	411	565	154	37%	\$50.04

Key: Yellow = Engineering & Petro Tech; Green = Field Techs; and Blue = Professional or Admin/Bus Support



ALIGNING EDUCATION, CERTIFICATION AND CAREER PATHWAYS

For the ShaleNET US Stackable Credentials Model

EDUCATION PATHWAY	CERTIFICATION PATHWAY	CAREER PATHWAY	EMPLOYER JOB TITLE/MEDIAN ANNUAL WAGES
BACHELOR OF SCIENCE APPLIED TECHNOLOGY <ul style="list-style-type: none"> • Pennsylvania College of Technology • Texas A&M University Commerce • Tarleton State University • University of North Texas- Dallas 	<ul style="list-style-type: none"> • NICET Industrial Implementation • Society of Petroleum Engineers • Engineer in Training (EIT) 	<ul style="list-style-type: none"> • Petroleum, Refinery Management • Site Management • Field Engineering • Facilities and Construction 	<ul style="list-style-type: none"> • Operations Manager (\$95,150) • Mechatronics Engineer (\$90,580) • Plant Operator (\$65,280) • Electrical Engineering Technologist (\$56,670)
ASSOCIATE IN PETROLEUM TECHNOLOGY or INDUSTRIAL MAINTENANCE OR MECHATRONICS TECHNOLOGY <i>(Title varies based on ShaleNET Hub)</i> <ul style="list-style-type: none"> • 63-64 Credit Hours • 22-26 Courses • Day/Evening Curriculum 	<ul style="list-style-type: none"> • MSSC Certified Production Technician • ETA Associate Electronics Tech • International Society of Certified Electronics Technicians • NICET Industrial Instrumentation 	<ul style="list-style-type: none"> • Petroleum, Refinery Operations • Plant Operations • Instrumentation Technology • Electronics Technology 	<ul style="list-style-type: none"> • Petroleum Pump System Operator (\$61,260) • Gas Plant Operator (\$59,550) • Electro-Mechanical Technician (\$51,220) • Industrial Engineering Technician (\$49,090) • Industrial Machinery Mechanic (\$46,270) • Maintenance Mechanic (\$39,490)
INDUSTRY CREDIT CERTIFICATE PROGRAMS 4 OPTIONS – Production, Pipeline, Process or Instrumentation & Electronics Technician <ul style="list-style-type: none"> • 36-42 Credit Hours • 14 Courses • Day/Evening Curriculum 	<ul style="list-style-type: none"> • MSSC Certified Production Technician • NICET Industrial Instrumentation • SafeLand USA 	<ul style="list-style-type: none"> • Production • Process • Pipeline • Instrumentation and Electronics • Field Automation 	<ul style="list-style-type: none"> • Instrumentation Technician (\$56,900) • Gas Pump Station Worker (\$52,440) • Geologic and Petroleum Technician (\$49,690) • Maintenance and Repair Worker (\$35,030)
INDUSTRY ENTRY-LEVEL NONCREDIT CERTIFICATE PROGRAMS <ul style="list-style-type: none"> • Roustabout • Floorhand • Production Technician • Welder Helper 	<ul style="list-style-type: none"> • SafeLand USA • Rough Terrain Forklift • Defensive Driving • First Aid/CPR • Crosby Basic Rigging • Aerial Work Platform • WorkKeys® National Career Readiness Certificate 	<ul style="list-style-type: none"> • Entry level occupations in Natural Gas and Oil (Petroleum) industry 	<ul style="list-style-type: none"> • Derrick Operator (\$45,220) • Roustabout (\$32,980) • Floorhand, Production Worker (\$27,440) • Helpers, Production Workers (\$22,520) <p>Drug Testing, Background Checks & Veterans/Certifications</p>



Associate in Applied Sciences (AAS)
Petroleum Technology
(63 credits)

REQUIRED COMPONENTS:

General Education Core Classes
18 credits

**C1 - Natural Gas and Oil Technology
(Core - 18 credits)**

Classes:

1. Introduction To The Natural Gas & Oil Industry
2. Safety (Industrial, Hazard, Gas/Oil Operations)
3. Introduction To Maintenance & Troubleshooting
4. Introduction To Circuit Analysis And Basic Electrical Measurements
5. Emergency Response
6. Environmental Protection Methods And Devices For The Natural Gas Industry
7. Communication, Teamwork And Conflict Resolution In Industry
8. Basic Principles Of Electricity For Industry
9. Introduction To SCADA

Specialized Electives (9 credits)

1. Choose courses from C2, C3, C4, and/or C5
2. Internship (9 credits)

CERTIFICATE (C) OPTIONS (CHOOSE ONE):

**C2 - Upstream
Production Technician (18 credits)**

Classes:

1. Production Operations
2. Well Control (Oil Field Hydraulics)
3. Well Drilling Operations
4. Cementing Operations
5. Hydrofracking Operations
6. Wireline Operations
7. Production Safety
8. Artificial Lift

**C3 - Midstream (Pipeline)
Pipeline Technician (18 credits)**

Classes:

1. Corrosion
2. Gas Compression And Liquid Pump Station Operations And Maintenance
3. Pressure And Flow Relief And Control
4. Pipeline, Facilities, And Station Construction And Inspection
5. Gas And Liquid Measurement

**C4 - Downstream
Process Technician (18 credits)**

Classes:

1. Gas Processing 1 & 2
2. State And Local Codes And Regulations (Petroleum Regulation)
3. Waste Water
4. Pipeline And Valve Operations And Maintenance
5. Gas Control Room Operations
6. Distribution Operation and Maintenance

**C5 - Industry Wide
Instrumentation and Electronics Technician (I & E) (18 credits)**

Classes:

1. Automation
2. Instrumentation And Process Control (Electronic Instrumentation)
3. Electricity For Industry
4. Petroleum Instrumentation (Intro To Measurement)
5. Petroleum Computer Application (Field Automation)
6. SCADA (1, 2, 3)



ALAMO
COLLEGES

Programas de Corto Plazo



Programs/Modulos de Corto Plazo

Spring 2014
Enrollments

NEST (New Employee Safety Training) 24 & 32 hour -Includes Frac 101, Hazmat, OSHA, Dot, Driver Safety, Ergonomics and Hand safety Trained 131 Incumbent workers and a class is in session this week with 11 employees.

130

SET (Safe Employee Training) 8-32 hours -_Includes Frac 101, Hazmat, OSHA, DOT, Driver Safety, Ergonomics and Hand safety. The training is divided into one day modules to allow the employer to select training specific to their needs.

278

PEC Safe -Land, SafeGulf–Basic and Core - This training includes incident reporting , accident prevention, Hand Safety, Material handling, behavioral safety, LOTO, hazard communication and more.

315

Medic First Aid CPR/AED - Certified Medic First Aid Class.

177

Oil and Gas Field Skill Worker **Boot Camp** - An accelerated intensive 124 hour training (4 week) program designed to teach basic oil and gas work skills. Participants will attain the following Certifications: Operator Cards for Tugger, Scissors Lift, Aerial Boom Lift, OSHA Safety Card, Red Cross CPR and First Aid Certifications. Plus will attain the CDL Driver License Permit.

60

Truck Driving Program - 5 Week CDL certification Program. Includes Regulations, Road, and Safety.

Open
Enrollment

Grand Totals

563

Programs/Modulos de Corto Plazo

Take the first step—enroll in our Boot Camp now!

Alamo Colleges Eagle Ford Boot Camp	College	Cost Per Student
Information Session - Presentations on what Eagle Ford is, job opportunities, and training options. (2 hour course)	Alamo Colleges	Free
Orientation Oil and Gas Industry - "Fracturing" process and hazards associated with a "fracking" site. (20 hour course)	Palo Alto College	\$225.00
Occupational Safety and Health Administration (OSHA) Regulations – General Industry - Course Description: A study of OSHA regulations. Each completer will receive an OSHA 10-Hour General Industry Safety Card. (12 hour course)	San Antonio College	\$110.00
Medic First Aid & CPR - Combined adult CPR, AED, and first aid training. Each completer will receive a Red Cross First Aid/CPR Card. (10 hour course)	Palo Alto College	\$125.00
Personal Computer Essentials - The fundamentals of supporting and troubleshooting computer hardware and software. (24 hour course)	Northwest Vista College	\$143.00
Teambuilding - Principles of building and sustaining teams. Focus on principles and processes of team building and conflict resolution. (20 hour course)	Northeast Lakeview College	\$203.00
Mobile Equipment Operation - Includes hands-on training and demonstration of proficiency. Completers will receive an Operator Card for 3 types of equipment: forklift, scissor lift, and aerial boom lift. (16 hour course)	St. Philip's College	\$450.00
CDL Prep Course - Prepares individuals to pass the required tests for a Texas CDL permit. Includes classroom instruction on general knowledge, air brakes, combination doubles/triples, hazardous materials and tanker vehicle endorsements. Texas Commercial Driver Handbook provided in preparation for the exams along with CDL practice test questions, in advance of taking the examination. Students will be responsible for registering for the written CDL exam at the local DPS offices. (20 hour course)	St. Philip's College	\$240.00
Total All Courses: 124 Hours		\$ 1,495.00

We can train you to be a professional truck driver



St. Philip's College and SAGE Corporation partner in a quality training program that exceeds the standard certification for entry level truck drivers. Students will learn tractor trailer vehicle systems, Department of Transportation rules and regulations, logs and legal topics pertaining to safe operations, cargo handling, hazardous materials and vehicle pre-trip inspection, as well as receive a defensive driving course.

All qualified applicants must be at least 21 years of age, have the ability to comprehend the English language, meet Department of Transportation regulations and pass a physical exam, as well as meet the Motor Carrier Safety Regulations, Qualifications of Drivers.

We offer a series of five-week courses. Classes are taught Monday through Friday from 8 a.m. to 5 p.m. at 7586 Highway 87 East in China Grove, Texas. The cost for the program is \$4,255.00

Register at least five days before the class starts at the Welcome Center or the Continuing Education Building on the St. Philip's College - Alamo Colleges Martin Luther King Drive campus. Payment should be made at the Business Office in the Welcome Center, Room 104.

For additional information, please call (210) 486-2400.

Financial aid may be available to qualified individuals. Eligibility is determined by the St. Philip's College - Alamo Colleges Student Financial Services Office. The office is located in the Welcome Center, Room 106. Call (210) 486-2600 for more information.

Pre-qualification: Student must provide documentation of DOT physical examination, DOT drug screening and MVR report prior to registration in the Truck Driving Program. For additional information, please call (210) 486-2787 or go to www.alamocolleges.edu/snc.



Calidad y Seguridad Industrial (ETS)

Alamo Colleges Continuing Education – Palo Alto Industrial Safety And Quality. Environmental, Occupational Health And Safety. This Program Is Designed To Offer Individuals The Opportunity To Learn The Regulations, Policies And Procedures Of Occupational Safety And Health Administration (OSHA) Required By Certain Occupations. Our Coursework Includes The Laws, Requirements And Codes Necessary For The Handling Of Hazardous Substances In The Workplace. We Also Provide Safety Coursework For General And Construction Industry That Focuses On Hazard Identification, Avoidance, Control And Prevention In The Workplace.

Topics Covered Can Include: Hazardous Waste Operations And Emergency Response, Electrical Safety, Blood Borne Pathogens Awareness, Hazardous Materials Transportation, Hazard Communication, Emergency Preparedness, Msds Program, And More. Flexible Delivery Modules Range From 40 Hour To 8 Hour - Energy Training Solutions – Certifications The Petroleum Industry





ALAMO
COLLEGES

Ayudantes- Trabajadores de extraccion PAC/SPC Electrical Trades Helpers; PAC/SPC Manufacturing Techs; and SPC Welders, Construction Techs; PAC/Electro Mechanic

Ayudantes- Trabajadores de extraccion

Help Extraction Craft Workers, Such As Earth Drillers, Blasters And Explosives Workers, Derrick Operators, And Mining Machine Operators, By Performing Duties Requiring Less Skill. Duties Include Supplying Equipment Or Cleaning Work Area.

Muestra de reporte de trabajo: Driller Helper, Coal Miner, Maintainer, Blasting Helper, Continuous Miner Operator Helper, Longwall Machine Operator Helper, Miner Helper, Mining Technician, Salt Miner, Underground Miner





ALAMO
COLLEGES

Programas de Largo Plazo

Certificados #1 y Associate Degrees



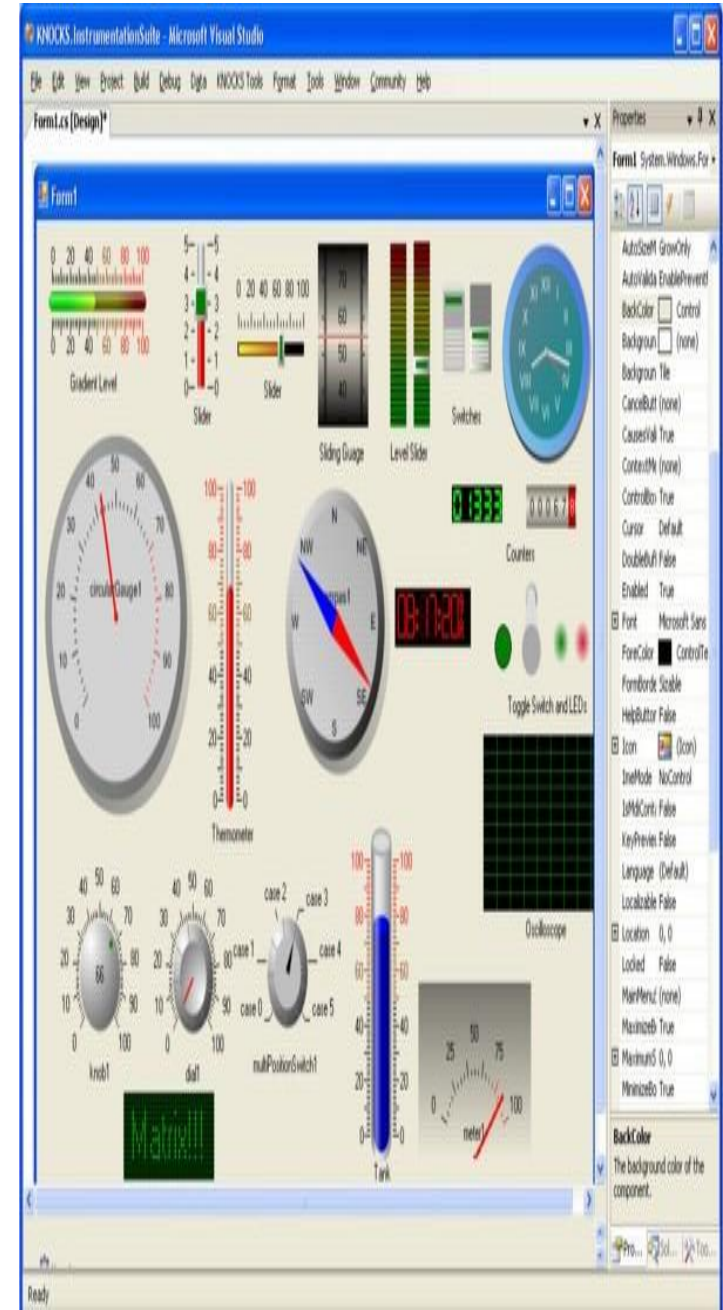


In Today's Fast-paced Business Climate, Companies Must Have Skilled, Trained Professionals That Can Keep Them Running Smoothly. If You'd Like To Work In A Career Field With Exciting Opportunities And Rewarding Challenges, Then Consider A Career In Air Conditioning And Heating Technology, Biomedical Technology, Computer Maintenance Technology, Cisco, Electrical Trades, Instrumentation Technology Or Renewable Energy. Your Future Is Assured In These High Wage, High Demand Occupations With A Degree Or Certificate From The Electronics Department. Cisco, Comptia, And NABCEP Certifications Are Available.

[Electronics Technology, Instrumentation](#)

[Electrical Trades](#)

[Power Generation and Alternative Energy](#)





Técnicos de muestras de pruebas Geológicas

Test Or Analyze Geological Samples, Crude Oil, Or Minerals To Detect Presence Of Petroleum, Gas, Or Mineral Deposits Indicating Potential For Exploration Or Production Or To Determine Physical Or Chemical Properties To Ensure That Products Meet Quality Standards.

Muestras de reportes de trabajos:

Laboratory Technician, Quality Control Technician (Qc Technician), Materials Technician, Core Inspector, Electron Microprobe Operator, Environmental Field Services Technician, Environmental Sampling Technician, Geological Sample Tester, Mud Logger





Alamo College Professional Truck Driving At St. Philip's College Offers A Quality 156-clock Hour Training Program Designed To Exceed The Standard Certification For Entry Level Truck Drivers. Students Will Learn Tractor Trailer Vehicle Systems, [Department Of Transportation \(DOT\)](#) Rules And Regulations, And Logs And Legal Topics Pertaining To Safe Operations. Additional Topics Include Cargo Handling, Hazardous Materials And The Vehicle Pre-trip Inspection And Students Will Receive A Defensive Driving Course. All Qualified Applicants Must At Least Be 21 Years Of Age, Have The Ability To Comprehend The English Language Sufficient To Meet Department Of Transportation Regulations And Pass A DOT Physical Exam As Well As Meet The Motor Carrier Safety Regulations; Qualification Of Drivers. Tuition Includes Books And Lab Fees. *Possible Energy Training Solutions 3 Day Oil Gas Cert.*

TEST DRIVE!

Not sure if our truck driving program is for you?

Give us a "test drive." Come in and spend some time with current students and instructors, including time in the trucks!

Feel the excitement of a great career...

No cost, no obligation.



Operadores de Unidades de Servicio, Petroleo

- **Operadores de unidades de servicio, petroleo, Gas y Minas.**
- Operate Equipment To Increase Oil Flow From Producing Wells Or To Remove Stuck Pipe, Casing, Tools, Or Other Obstructions From Drilling Wells. May Also Perform Similar Services In Mining Exploration Operations. Includes Fishing-tool Technicians.
- **Muestras de reportes de trabajo:** Rig Operator, Pulling Unit Operator, Service Rig Operator, Fishing Tool Supervisor, Service Operator, Reverse Unit Operator-fisherman, Tool Pusher, Well Servicing Rig Operator, Wireline Operator, Work Over Rig Operator





- **Tuberos Wellhead**
- Operate Power Pumps And Auxiliary Equipment To Produce Flow Of Oil Or Gas From Wells In Oil Field.
- **Muestra de reporte de Trabajo:** Pumper, Lease Operator, Well Tender, Operations Technician, Wellhead Pumper, Oilfield Plant And Field Operator, Production Operator, Multi-skilled Operator, Well Head Pumper, Gauger





Gerentes General y de Operaciones

Plan, Direct, Or Coordinate The Operations Of Public Or Private Sector Organizations. Duties And Responsibilities Include Formulating Policies, Managing Daily Operations, And Planning The Use Of Materials And Human Resources, But Are Too Diverse And General In Nature To Be Classified In Any One Functional Area Of Management Or Administration, Such As Personnel, Purchasing, Or Administrative Services.

Muestra reporte de trabajo: Operations Manager, General Manager (Gm), Director Of Operations, Plant Manager, Store Manager, Facilities Manager, Plant Superintendent, Vice President Of Operations, Warehouse Manager, Chief Operating Officer (Coo)





- **Contabilidad, Auditoria oficinistas**
- Compute, Classify, And Record Numerical Data To Keep Financial Records Complete. Perform Any Combination Of Routine Calculating, Posting, And Verifying Duties To Obtain Primary Financial Data For Use In Maintaining Accounting Records. May Also Check The Accuracy Of Figures, Calculations, And Postings Pertaining To Business Transactions Recorded By Other Workers.
- **Muestra de reporte de trabajos:** Accounting Clerk, Accounting Assistant, Accounts Payables Clerk, Bookkeeper, Account Clerk, Accounts Payable Clerk, Accounts Receivable Clerk, Account Receivable Clerk, Accounts Payable Specialist, Accounting Associate



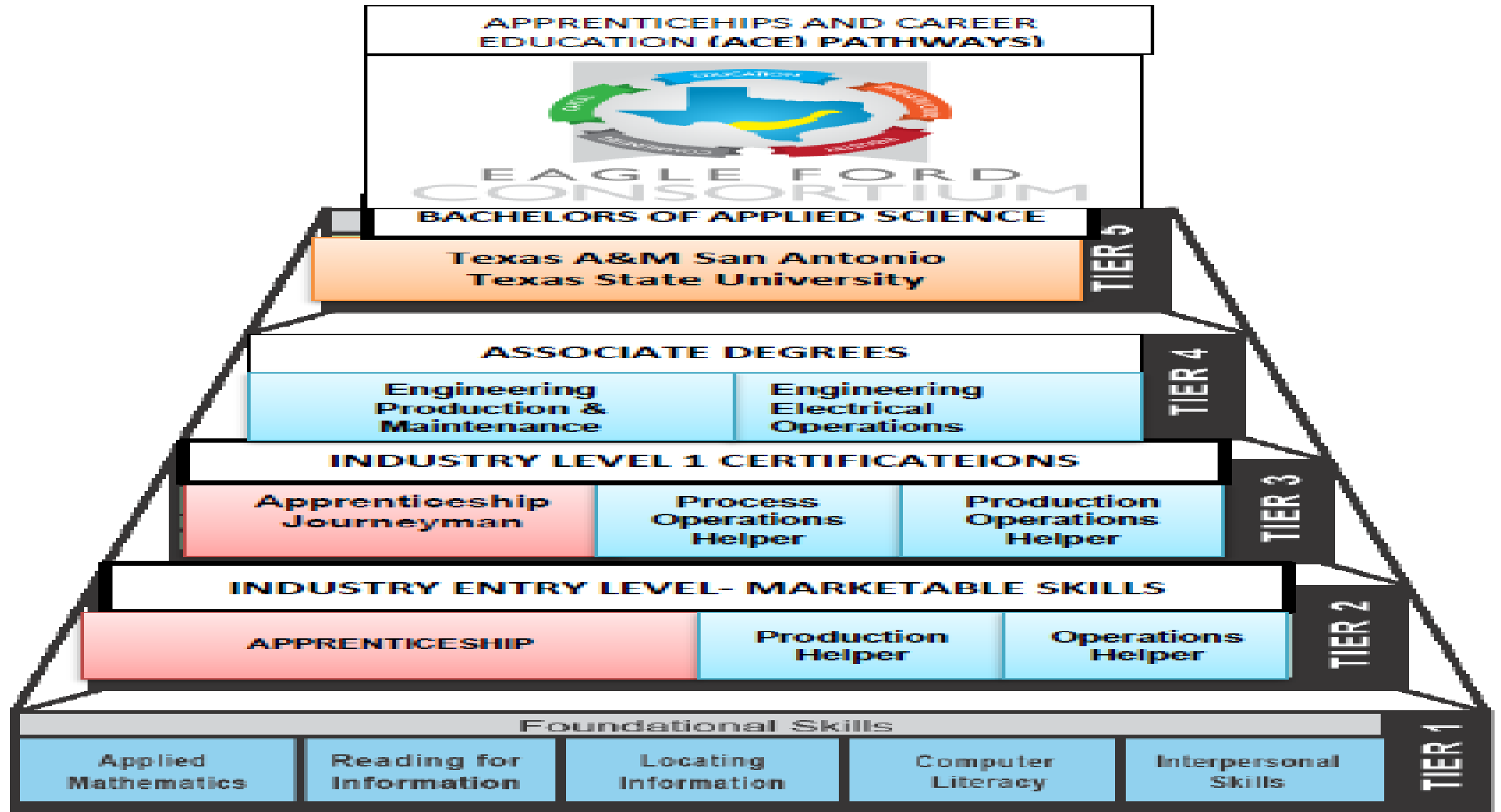
4. Inversión en mejorar educación y entrenamiento - “Capacity Building”



- Inversión en investigaciones y estudios de la fuerza laboral
- Inversión en capacitación de maestros y profesores
- Inversión en “curriculum” programas de estudio
- Inversión en equipo



Preguntas??



ROI - Alamo Colleges

Eagle Ford Shale Activities

AAS Pathway - **Associates of Applied Science Degrees in Oil and Gas Technology** - Palo Alto College

- Level 1 Certificates
- Marketable Skills Newest Academy

New Alamo Dual Credit Academy Pathway – Heavy Equipment Technology

- Level 1 Certificate in Heavy Equipment Operator Skills
- at St. Philips College Southwest Campus Diesel Program

\$1.5 Million Skill Development Grant to train 673 new workers and 300 current Weatherford workers as field engineers, operators, technicians. **\$1.6 Million – THECB –VAST/IBEST** leadership grant to mentor Laredo Community College, Coastal Bend, Southwest Texas Junior College, and Victoria College to implement I-Best programs for limited English Speaking Persons in the Eagle Ford Shale area to enter job training programs in demand occupations.

Annual Tuition and Contract Revenues - \$ 3 Million; 1,500 enrollments



FIRST
EXPO
FORUM

ENERGY COAHUILA 2014